



SEEARA™ Zoom Lens – 150-500 mm F5-6.3 Telephoto Lens

Features

- **Standard 150-500mm F5-6.3 Telephoto lens**
- **Motorized zoom and focus**
- **Video data streaming**
- **User friendly GUI includes:**
 - **Software controlled zoom and focus**
 - **Image Capture**
 - **Automated zoom, focus, tracking, and image acquisition**
 - **Object tracking**
 - **Real time image processing**
 - **Post image processing**
 - **Video streaming**
- **Optional custom lens**
- **Optional integrated computer vision system available with:**
 - **Up to 12 megapixels camera**
 - **High resolution, high speed**
 - **Choice of camera interface – CameraLink, GigE, Firewire, USB, or Ethernet**
- **Optional object tracking system**

Applications

- **Security, Surveillance**
- **Videoconferencing**
- **Medical/Scientific Imaging**
- **Machine Vision**

Telephoto Zoom Lens with Motorized Zoom and Focus, Plus Feature-Rich Software. Also Available in an Integrated Computer Vision System with up to 12 Megapixels High Resolution Camera. For Machine Vision, Surveillance, Videoconferencing, and Medical/Science Applications.



Overview

The SEEARA™ zoom lens features an easy to use GUI with software controlled zoom and focus, automated zoom, focus, tracking, and image acquisition image acquisition, object tracking, real time image processing, post image processing, and video streaming. We also develop customized versions of this lens to suit your needs.

An optional vision system is available with a camera of up to 12 megapixels and your choice of camera interface. We can also provide an optional object tracking system.

Visions Connection
11409 West Bernardo Court • San Diego, CA 92127
Phone: 714-296-5768 • Fax: (858) 613-1815
www.visionsconnection.com
Contact: Al Sabeh
E-mail: al@visionsconnection.com

Specifications

General Specifications

Focal Range	150-500 mm
Aperture	F5-6.3
Mechanical	Standard motor assembly to control two axis motions - Zoom and Focus
Communication	USB, optional RS232 or Ethernet

Physical and Power

Power	100-120VAC
Dimensions	12" (W) x 13" (H) x 17" (D) 305 x 330 x 432 mm
Weight	460g (16.2 oz.)
Operating Temp.	0°C to 70°C
Storage Temp.	-40°C to 85°C
Relative Humidity	5 to 95%, non-condensing

NOTE: Software is included at no additional charge.

NOTE: We can customize any F-mount FOV Lens with Motorized Zoom and Focus, with NRE cost paid upfront.

Ordering Information

SEEARA: Standard SEEARA Zoom Lens

SEEARA Custom: Custom Zoom Lens

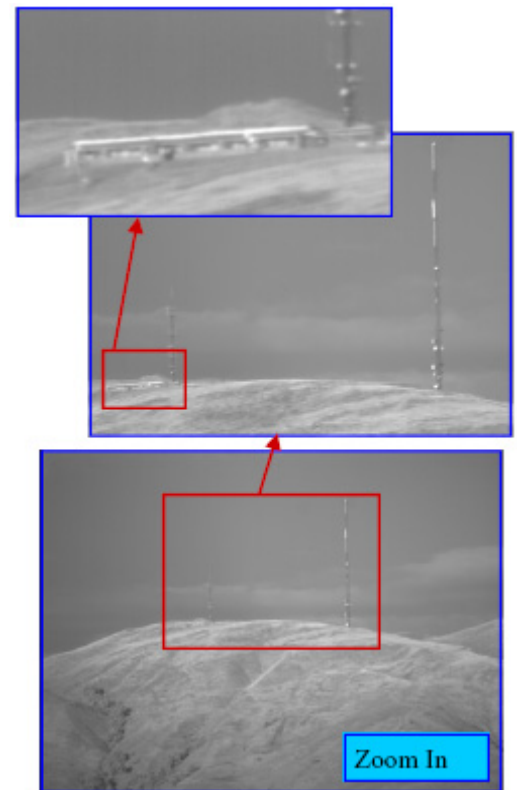
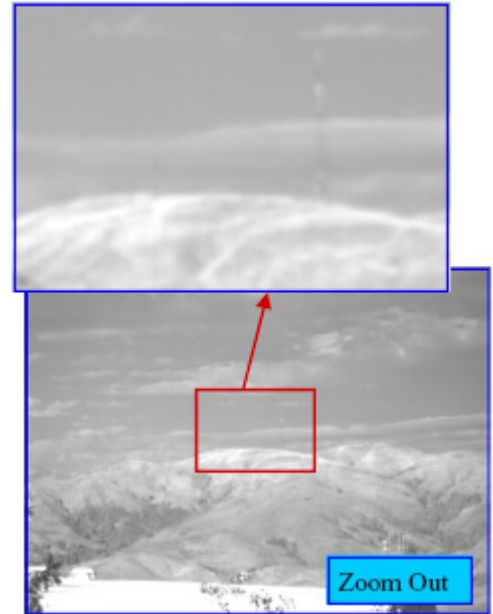
SEEARA Zoom Lens System: Vision system with –

- SEEARA Zoom Lens
- High speed, high resolution Camera – up to 12 megapixels
- Choice of camera interface

© 2011 Visions Connection. SEEARA is a trademark of Visions Connection. All other trademarks and registered trademarks are the properties of their respective owners. All rights reserved. Specifications are subject to change without notice.

Visions Connection
11409 West Bernardo Court • San Diego, CA 92127
Phone: 714-296-5768 • Fax: (858) 613-1815
www.visionsconnection.com
Contact: Al Sabeh
E-mail: al@visionsconnection.com

Sample Pictures



Object above is about 10 miles away from the camera system.