

LCA4

Zoom, Focus, and Iris Control

Compatible with standard, single common zoom lenses

Power Source: 100~120V or 220~240V AC
(Changeable) 50/60Hz

Power Consumption: Max. 6W (at 100VAC)

Operation:

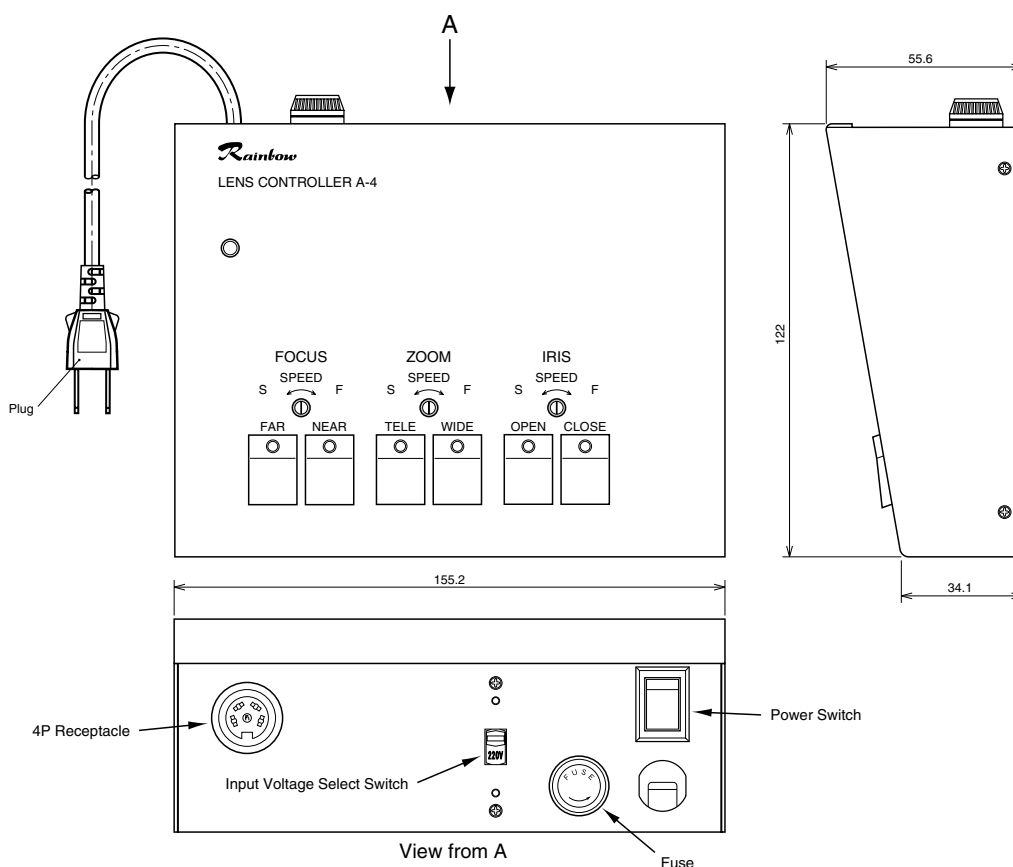
- 1) Select input power using Input Voltage Select Switch on rear of unit (100V or 220V).
- 2) Insert the plug and turn the power switch on.

3) The output voltage select switch is changeable between 6.4VDC and 12VDC operation to suit the motorized zoom lens application.

4) Zoom, Focus, and Iris are operated by pushing the button switches. (When using an MEA/EZ-MGE Type auto-iris lens, the iris buttons will not work because the iris is controlled by the internal lens circuit)

Operation Temperature: -10° ±50°C

Size, Approx. Weight: 155.2 × 55.6 × 122mm (w/h/d), 1.2Kg
(Approx. 6.1 × 2.2 × 4.8in., 2.6lb.)



- Circuit Diagram -

